

# GCSE Art & Design



**Stretford**  
Grammar School

*Aspirat primo fortuna labori*

**Our students are encouraged to produce a broad range of work**





# Selected Prep Work



Qian (left); Pearl (right)

# Selected Prep Work



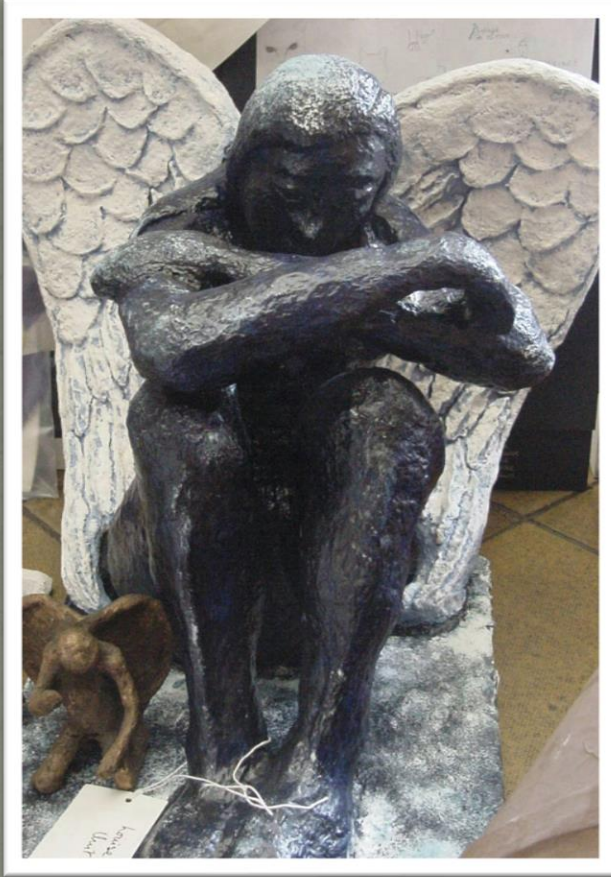
Hidaya (left); Maryam (right)

# Selected Three-Dimensional Work



Morgan (left); Kay (right)

# Selected Three-Dimensional Work



**Louise (above);  
Natalia (right)**



# Selected Student Showcases



# Pearl (2005)



# Qian (2006)



# David (2008)



# Hoi-Yan (2008)





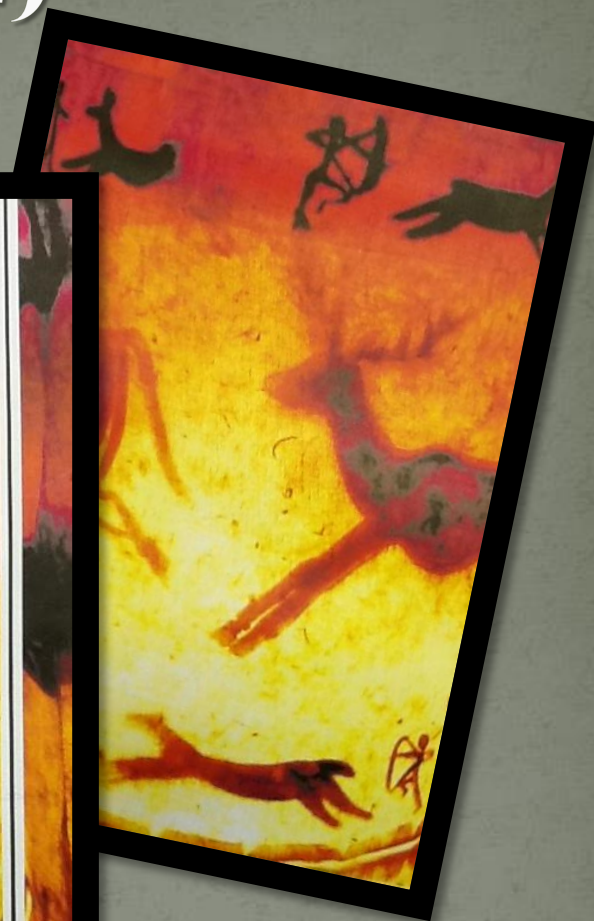
# Apoorva (2010)



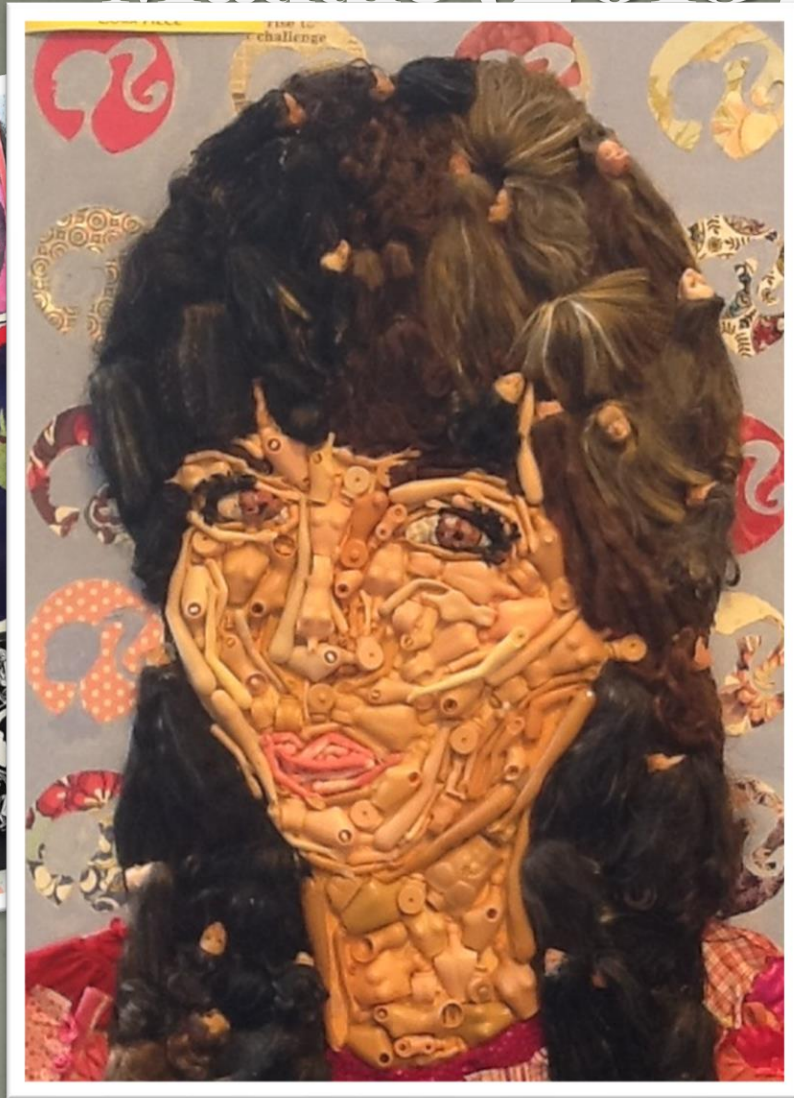
# Poppy (2011)



# Lauren (2012)



# Maddie (2013)



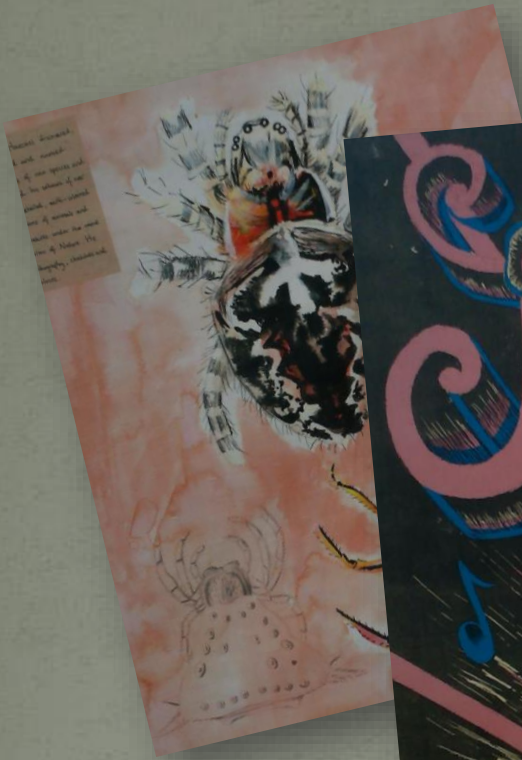
# Alice (2014)



# Angie-Lee (2014)



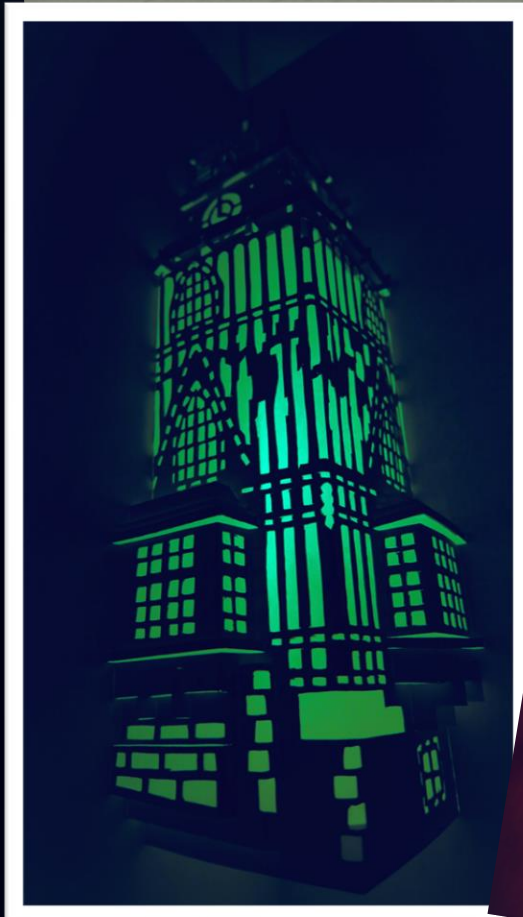
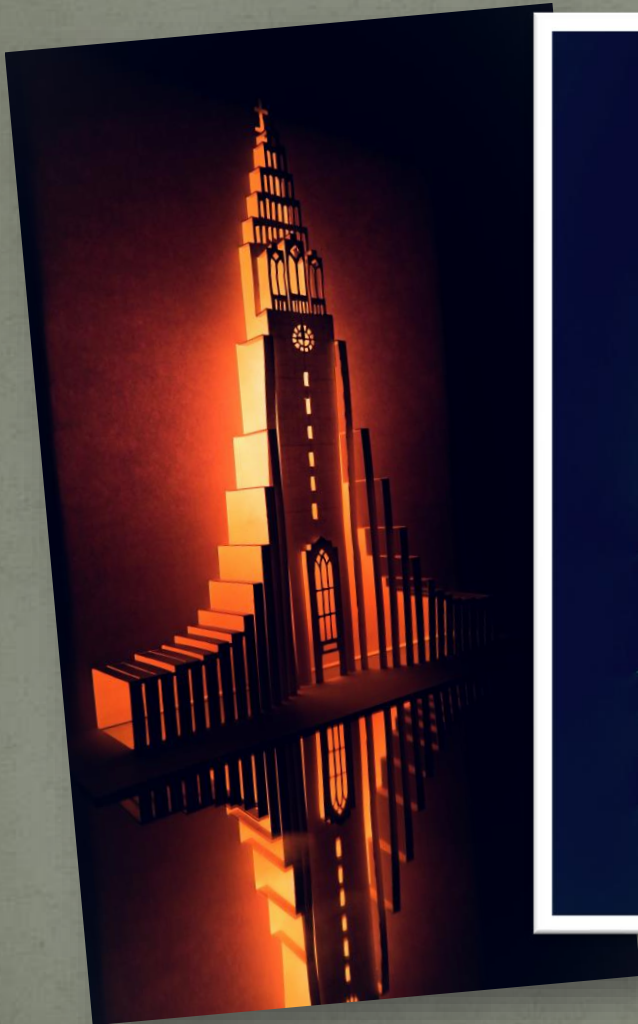
# Evie Cobb (2015)



# Kyaw (2016)



# Felix (2017)



# Caitlin (2018)



# Katie (2019)



# Maddie (2020)



# Aoife (2021)



# Edie (2022)



# Faye (2023)



# GCSE Results – last 12 years

- 2023 – 100% 9-4; 55% 7-9
- 2022 – 100% 9-4; 75% 7-9
- 2021 – 100% 9-4; 52% 7-9
- 2020 – 100% 9-4; 55% 7-9
- 2019 – 90% 9-4; 19% 7-9
- 2018 – 89% 9-4; 13% 7-9
- 2017 – 100% A\*-C; 70% A\*/A
- 2016 – 95% A\*-C; 57% A\*/A
- 2015 – 97% A\*-C; 45% A\*/A
- 2014 – 97% A\*-C; 38% A\*/A
- 2013 – 93% A\*-C; 43% A\*/A
- 2012 – 97% A\*-C; 43% A\*/A

# GCSE Exhibitions

